



Omni-View

Configuration manual

Omni-View
Volume 3.0

Copyrights

Omni-View is a trademark of Genesis Digital Imaging, Inc.

All products and company name mentioned herein should be considered registered trademarks or trademarks of their respective companies.

© 2008 Genesis Digital Imaging. All rights reserved.

The information in this manual is subject to change without notice.

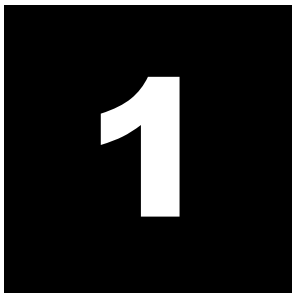
02/15/2008



USER MANUAL

Table of Contents

How to setup OmniVue to access OmniArchive Configuration	5
---	----------



Chapter

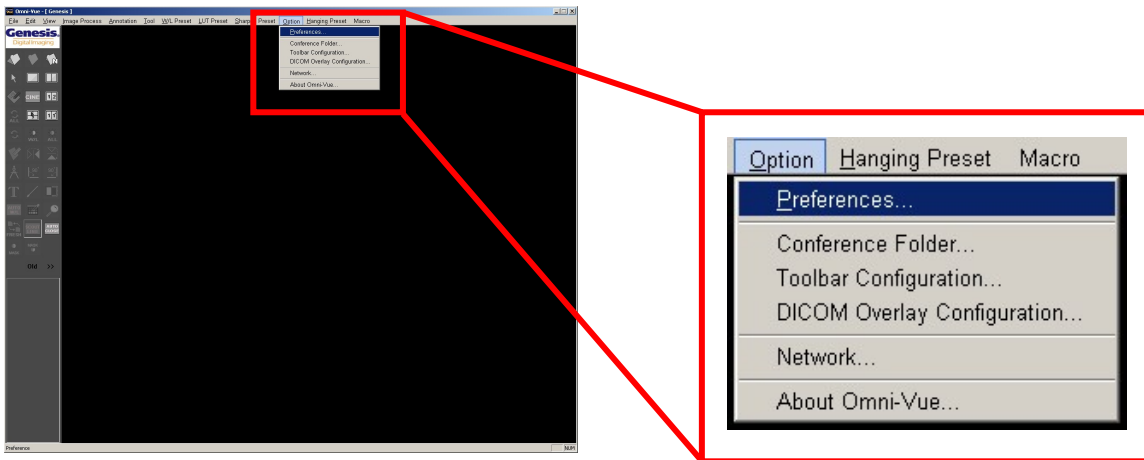
How to setup OmniVue to access OmniArchive

- Configuration

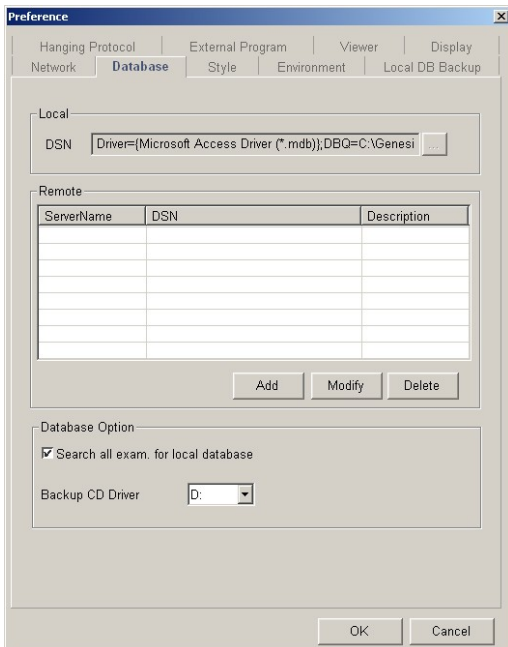
Configuration

Note: To configure Omni-Vue to access OmniArchive, license dongle is required. Please ask Genesis Tech. Support to verify your license or look at a USB dongle and it should say 'Neo Vue' on the label

1. Launch Omni-Vue and login
2. Go to **Option >> Preferences...**

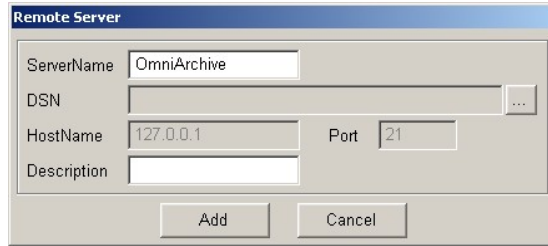
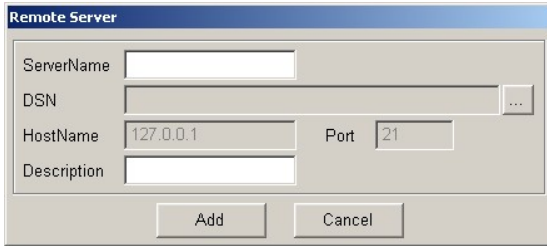


3. Click **Database** tab and click **Add**

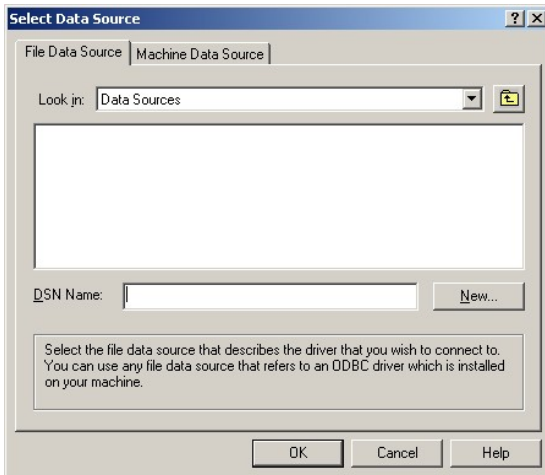


Note: If **Add** button is disabled, then you have incorrect license or your license is not activated. To activate or check your license, go to **Environment >> Click Recheck dongle** button, and restart OmniVue. Please contact Genesis Tech. Support if you have further question.

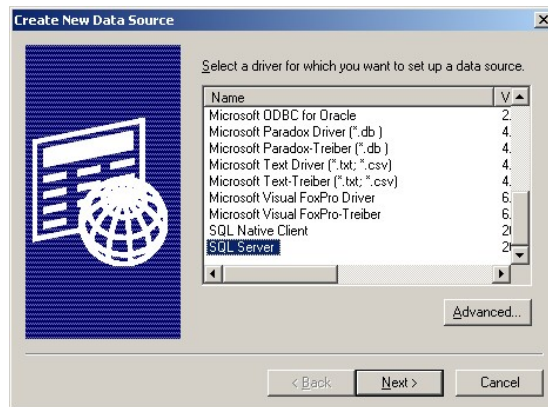
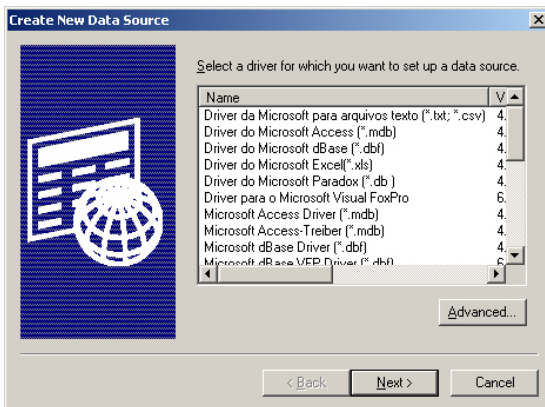
4. Type “OmniArchive” in ServerName and click  button



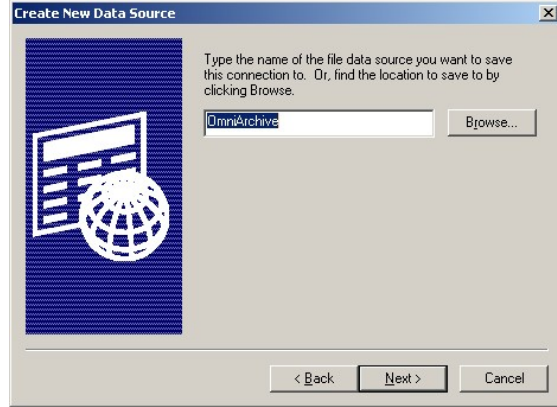
5. Click **New**.



6. Scroll down and select **SQL Server**, and click **Next**.



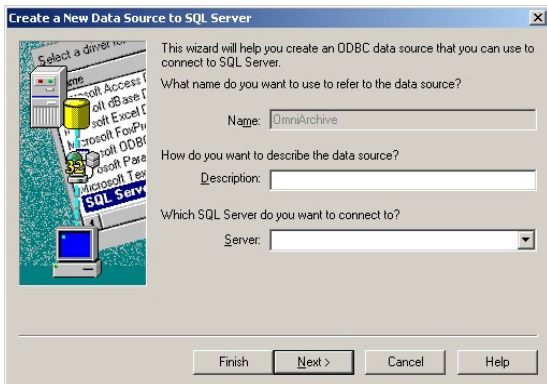
7. Type **OmniArchive** and click **Next**.



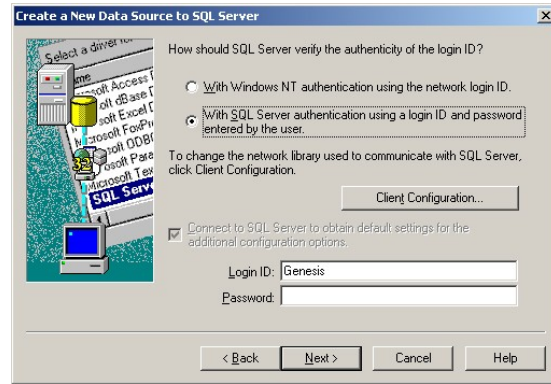
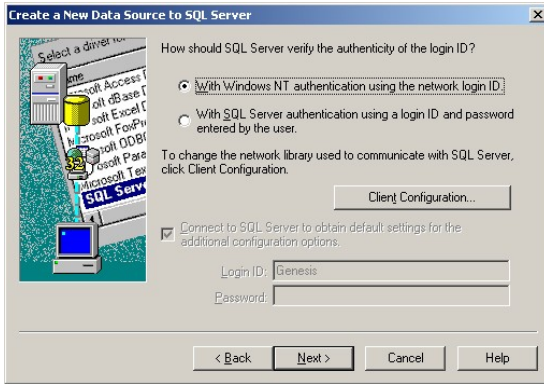
8. Click **Finish**.



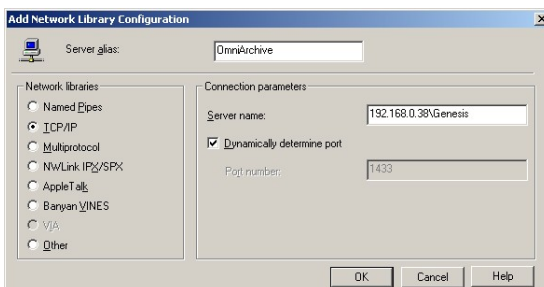
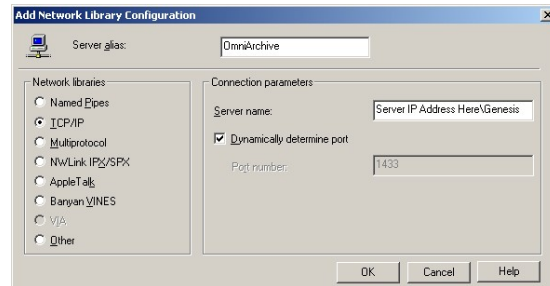
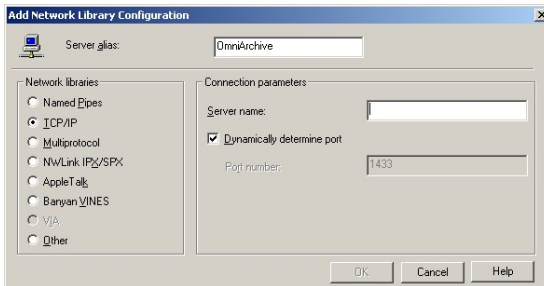
9. Click **Next**.



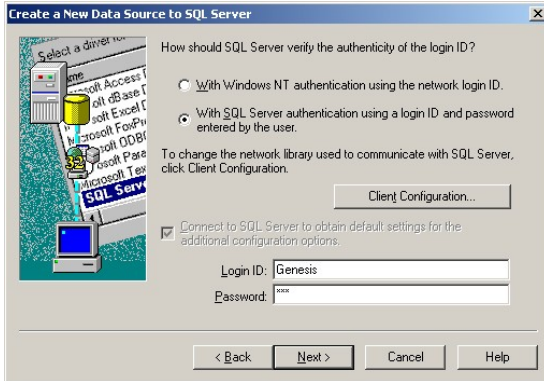
10. Select “With SQL Server authentication using a login ID and password entered by user” and click **Client Configuration**.



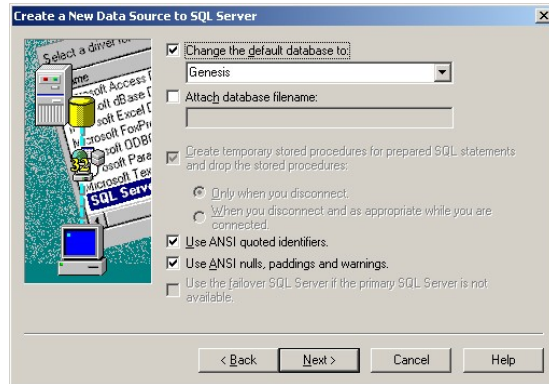
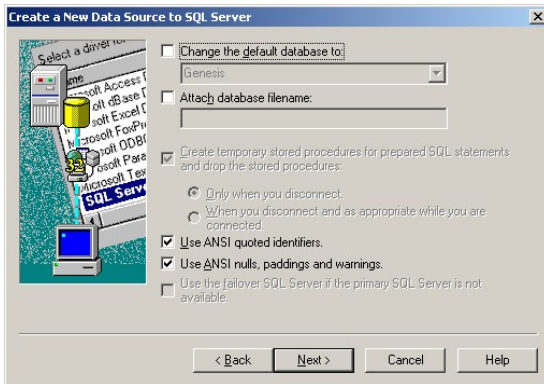
11. Type “**Server IP address\Genesis**” in Server name. For example server IP address is **192.168.0.38**, then type “**192.168.0.38\Genesis**” in Server name, and then click **OK**. You need to get a server IP address from network administrator or PACS administrator.



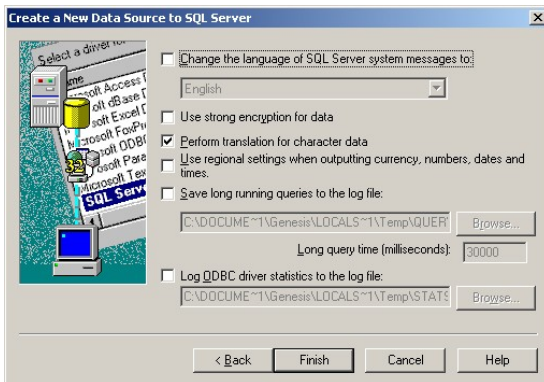
12. Type “Genesis” in Login ID and “gdi” in Password. And click **Next**.



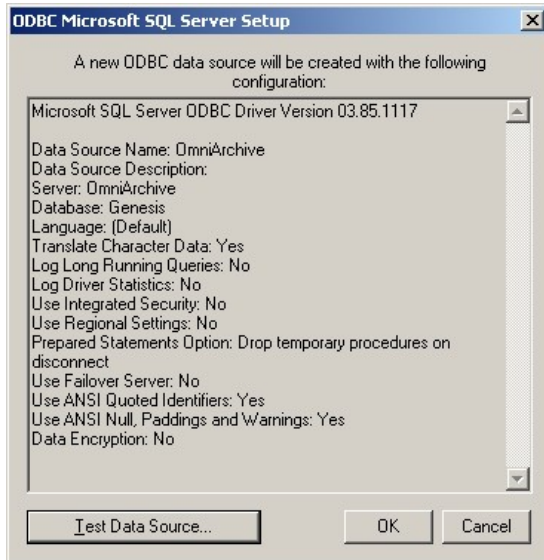
13. Check “Change the default database to:” and make sure “Genesis” is selected in combo box. And click **Next**.



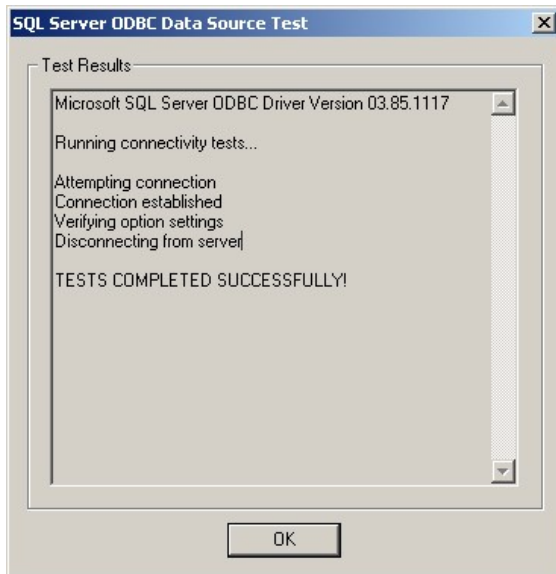
14. Click **Finish**.



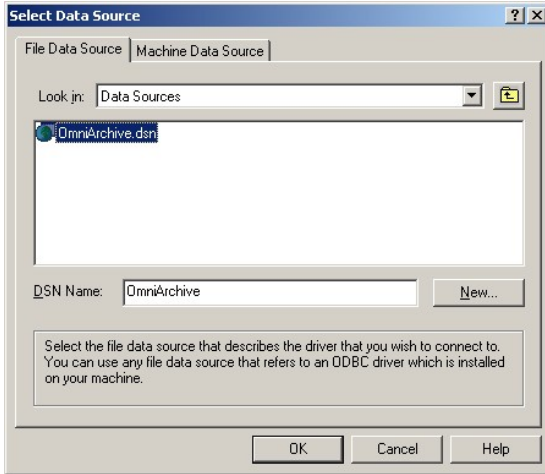
15. Click **Test Data Source**.



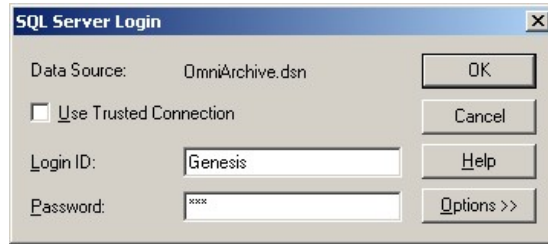
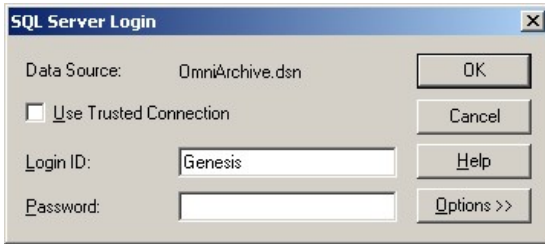
16. Make sure, you can see **“TESTS COMPLETED SUCCESSFULLY!”** in the window. And click **OK**.



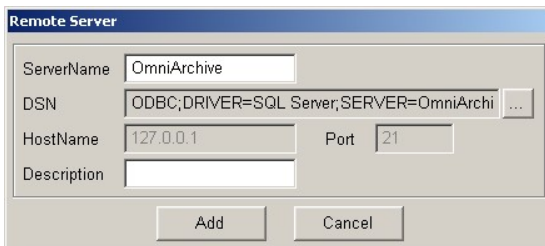
17. Click **OK**.



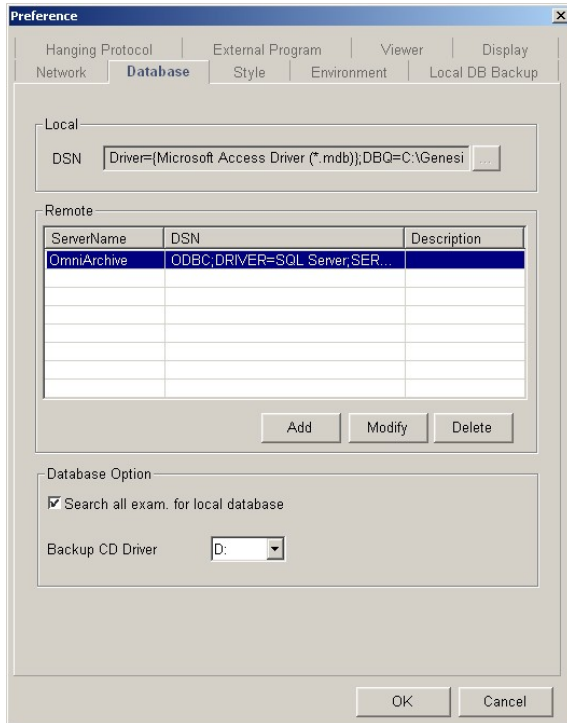
18. Type “gdi” in password and click **OK**.



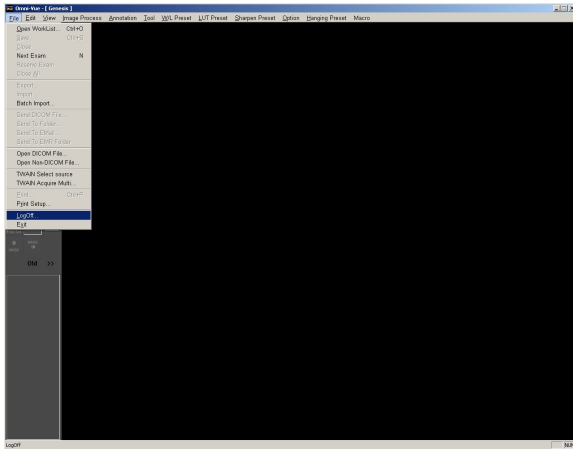
19. Click **Add**.



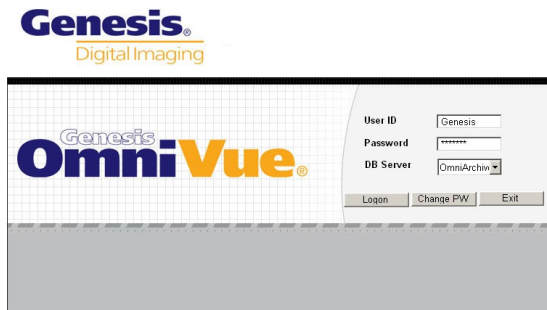
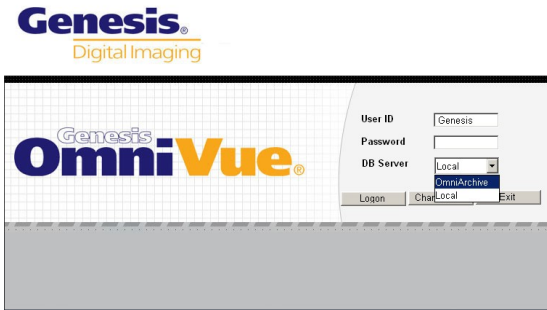
20. Click OK



21. Click File >> LogOff...



22. Select “OmniArchive” at DB Server, and type UserID / Password as Genesis/Genesis.



21. Query to database if there are any exams archived to OmniArchive.

Srs	Pkt	Patient Name	Modality	Study Desc	Study Date	#Srs	#Meta	#Obj	Report	Verify	Package	Doctor	Comments
M	TEST0014	Chew, Ben	CR	Chest AP	12/12/07 15:51:52	1	2	0	Online	Unread	No		
M	GGEST0014	Chew, Ben	CR		12/12/07 16:38:52	1	1	0	Online	Unread	No		
M	TEST0010	Shaw, John	CR	Chest AP and LAT	11/01/07 16:57:38	1	2	0	Online	#Pgenesis	Yes	DonSmith	
M	TEST0010	Shaw, John	CR	Chest AP	11/01/07 16:39:28	1	1	0	Online	Unread	Yes	DonSmith	
M	GGEST0010	Shaw, John	CR	Chest AP and LAT	11/01/07 13:39:18	1	1	0	Online	Unread	No		DonSmith
M	GGEST0010	Shaw, John	CR	Chest AP	11/01/07 16:48:10	1	1	0	Online	Unread	No		DonSmith
M	102013	Mohajeri, Mostafa	CR	Chest Study	10/22/07 12:22:34	2	2	0	Online	Unread	No		
O	54624052	Ungep, Steven	CR	Torso (L & R)	10/18/07 10:14:39	1	1	0	Online	Unread	No		
M	TRAVELER	Shaw, John	CR	Spine Cervical	08/29/07 16:16:25	1	8	0	Online	Unread	No		Cassels
M	GGEST0010	Shaw, John	CR	Chest AP	06/07/07 11:09:35	2	2	0	Online	Unread	No		
M	GGEST0010	Shaw, John	CR	Chest AP	06/07/07 12:58:33	1	2	0	Online	Unread	No		