

Genesis  
**OmniLink™**

**Installation Manual**  
**Version 1.9.1**

**OmniLink™**  
Version 1.9.1

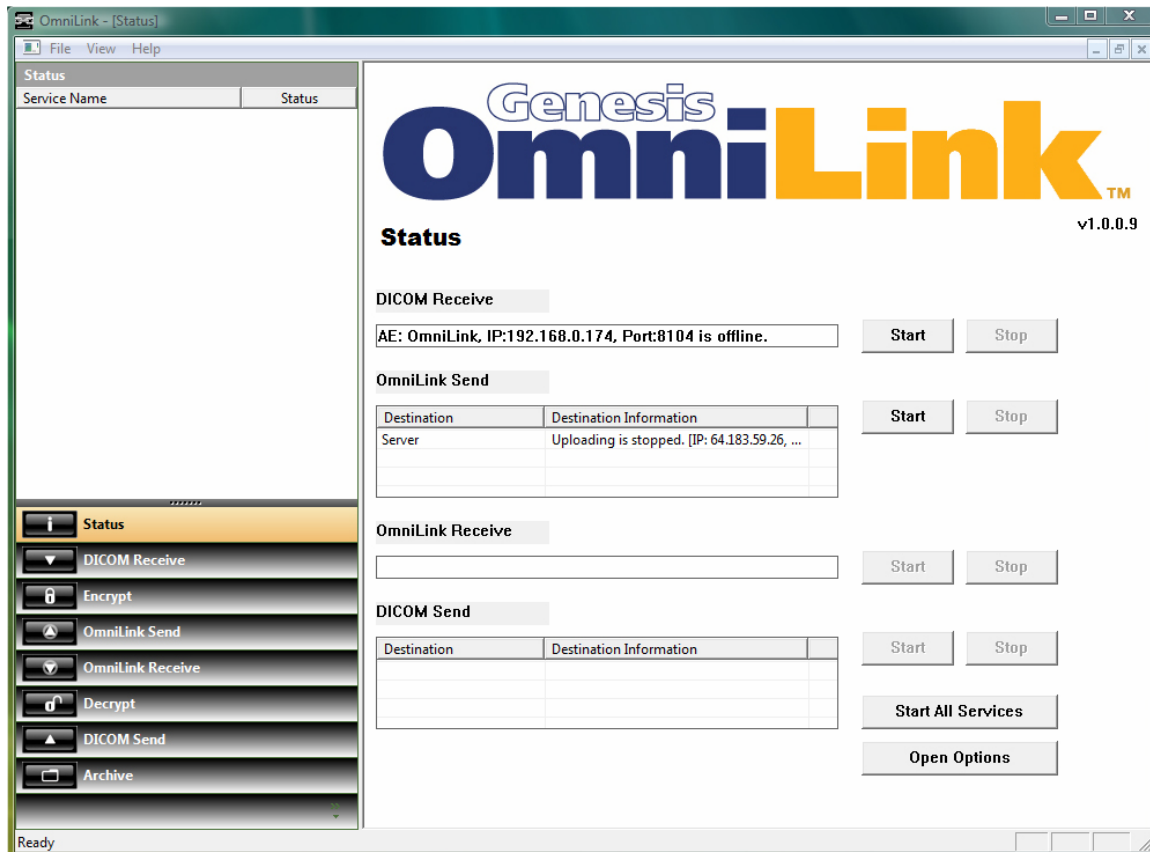
## Table of Content

---

|   |          |
|---|----------|
| <b>OMNILINK INSTRUCTIONS MANUAL</b> ..... | <b>3</b> |
| 1. CONFIGURING OMNILINK RECEIVE: .....    | 4        |
| 2. CONFIGURING OMNILINK SEND:.....        | 6        |
| 3. CONFIGURING DICOM RECEIVE: .....       | 7        |
| 4. CONFIGURING DICOM SEND:.....           | 8        |

# OmniLink Instructions Manual

**\*OmniLink Receive MUST be configured First**  
**\*\*Receiving end must ALSO download and install software**



## 1. Configuring OmniLink Receive:

(From main Status Window)

1. Click OPTIONS button
2. Select the OMNILINK RECEIVE tab

General | DICOM Receive | DICOM Send | OmniLink Send | **OmniLink Receive**

Local Information

IP: 192.168.0.174      Connection Port: 8021

Login Timeout: 600 Sec      Transfer Timeout: 600 Sec

| No. | Login ID | Transfer Port |
|-----|----------|---------------|
| 1   | CR1      | 8022          |

Add   Edit   Delete

Routing Rules

| Rule Name | Destinations |
|-----------|--------------|
|-----------|--------------|

New Rule   Edit Rule   Delete

Save & Restart   Close

(Receiving PC must have static IP address)

3. From this tab, make note of the IP and Connection Port for use in later steps
4. Click ADD to authorize sending OmniLink(s)

Add / Edit

Login ID: CR1

Transfer Port: 8022

OK   Cancel

(Each Sender will require a Unique Login ID)

**HINT:** Selecting a Transfer Port- We advice to have 1st ID's Port as 8022, with each consecutive ID having higher port: 8023,8024...

## Useful Information on General Tab:

The screenshot shows the 'General' tab of the OmniLink software interface. At the top, there are five tabs: 'General', 'DICOM Receive', 'DICOM Send', 'OmniLink Send', and 'OmniLink Receive'. The 'General' tab is selected.

Under the heading 'Current ports being used', there is a table with the following data:

| Port | Use                          | Type |
|------|------------------------------|------|
| 8104 | DICOM SCP                    | LAN  |
| 8021 | OmniLink Receive(Connection) | WAN  |
| 8022 | OmniLink Receive(Transfer)   | WAN  |
| 8023 | OmniLink Receive(Transfer)   | WAN  |

Below the table is a section titled 'Dongle Info.' containing four checkboxes and a button:

- DICOM SCP:  Enabled
- OmniLink Receive:  Enabled
- DICOM SCU:  1
- OmniLink Send:  1

A 'Recheck Dongle' button is located to the right of the checkboxes. At the bottom of the window, there are two buttons: 'Save & Restart' and 'Close'.

(If starting from main Status window: click options, then select General tab)

1. Select the GENERAL Tab

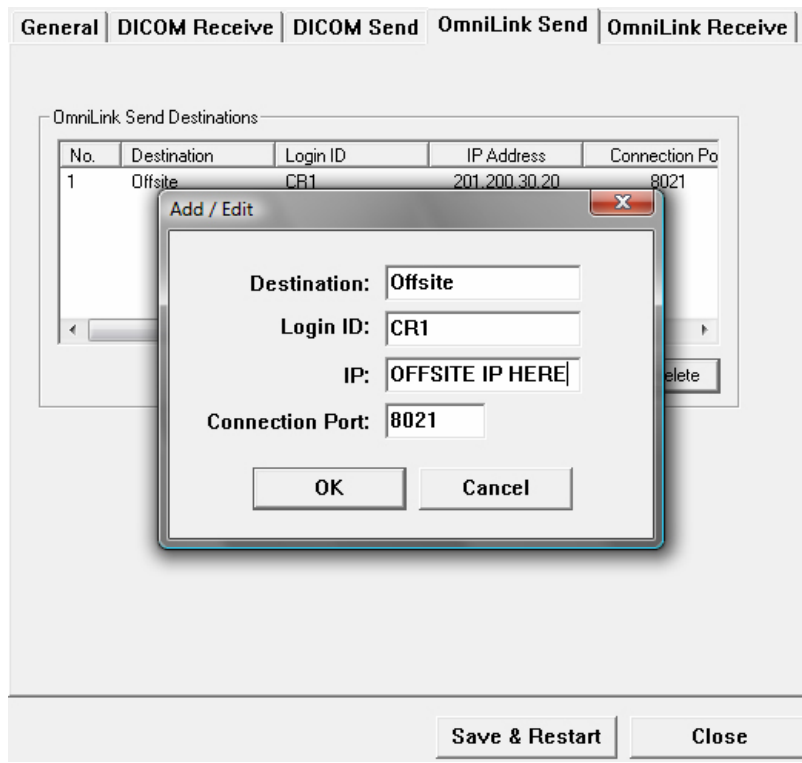
2. Notice which ports are labeled as WAN (Wide Area Network)

\*Ports labeled as "WAN" will need to be configured on router for port forwarding to the local IP address for this copy of OmniLink.

\*You may also need to enable WAN ports through your Windows firewall.

For assistance with router configuration please contact your Facility's IT person.

## **2. Configuring OmniLink Send:**



(If starting from main Status window: click options, then select OMNILINK tab)

1. Select the OMNILINK SEND Tab
2. Click ADD to authorize receiving OmniLink(s)

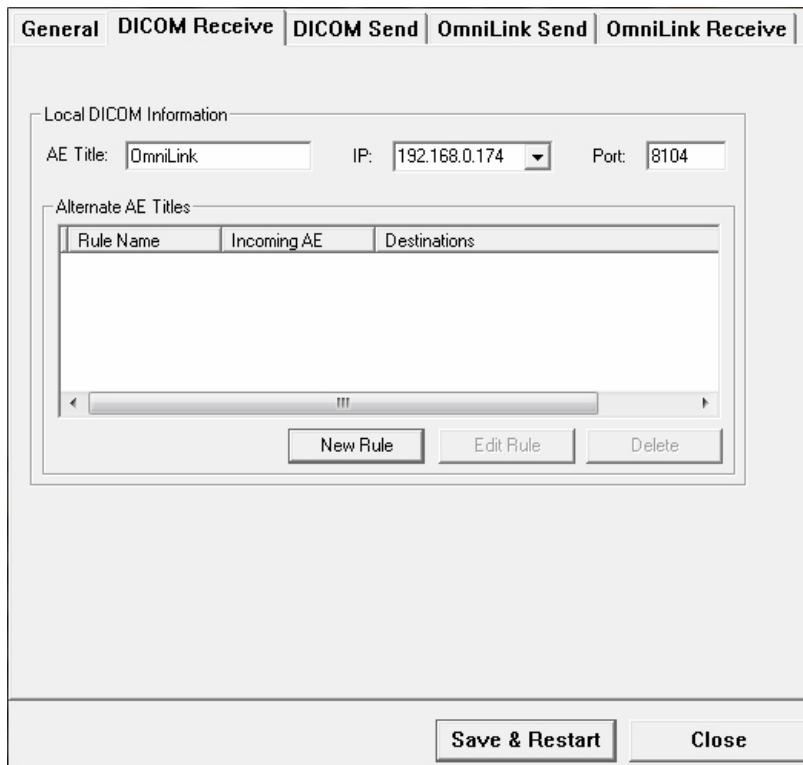
**Choosing Destination:** Use an easily identifiable keyword

**Login:** Use the same Login configured on OmniLink Receive Tab

**Connection Port:** Match with Port at top of OmniLink Receive Tab  
(noted in an earlier step)

(Screen Shot of Destination, Login Port Tiny Window)

### **3. Configuring DICOM Receive:**

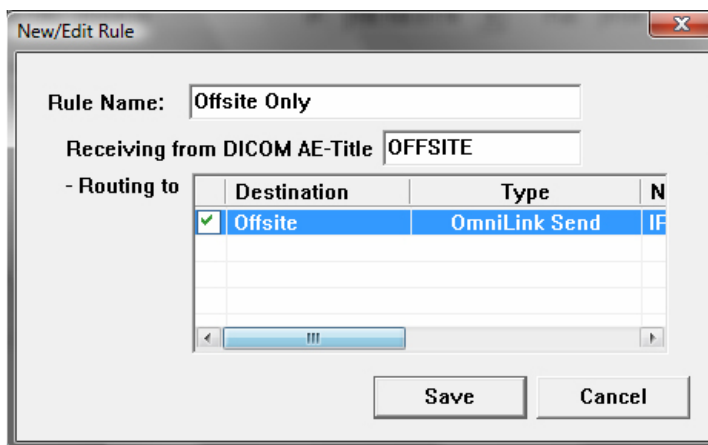


(If starting from main Status window: click options, then select DICOM Receive tab)

1. Select the **DICOM RECEIVE** Tab
2. The Default AE title, Routing Address and Port are displayed.
3. The information on this tab should only be changed if advanced configuration is required

### **Advanced DICOM Receive Configuration:**

From this tab new AE titles can be created for specific routing rules



#### **4. Configuring DICOM Send:**

General | DICOM Receive | **DICOM Send** | OmniLink Send | OmniLink Receive

Local DICOM Information

AE Title:  IP:  Port:

Destinations

| No. | Destination | AE Title | IP Address | Port |
|-----|-------------|----------|------------|------|
|-----|-------------|----------|------------|------|

Add Edit Delete

DICOM Communication Time Out

Connection Time Out:  secs Transmission Time Out:  secs

(If starting from main Status window: click options, then select DICOM Send tab)

1. Select the **DICOM SEND** Tab
2. Click **ADD** to add Destination Viewer or PACS

Add / Edit

Destination:

AE Title:

IP:

Port:

OK Cancel

#### **When you are finished:**

1. Click **OK**
2. Click **SAVE & RESTART**

***Please Contact Genesis Digital by visiting <http://www.genesisdigital.com> if you require further assistance or to report any bugs with this software.***

**Digital Imaging Simplified**

**[www.genesisdigital.com](http://www.genesisdigital.com)**

© 2008 Genesis Digital Imaging, Inc.